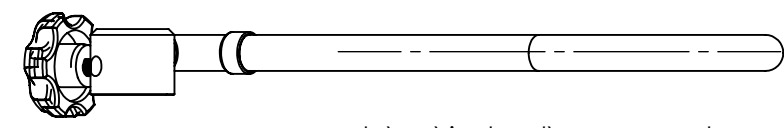
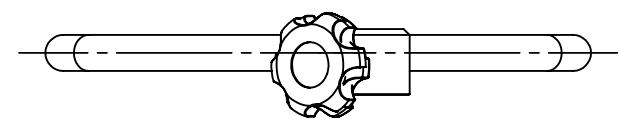
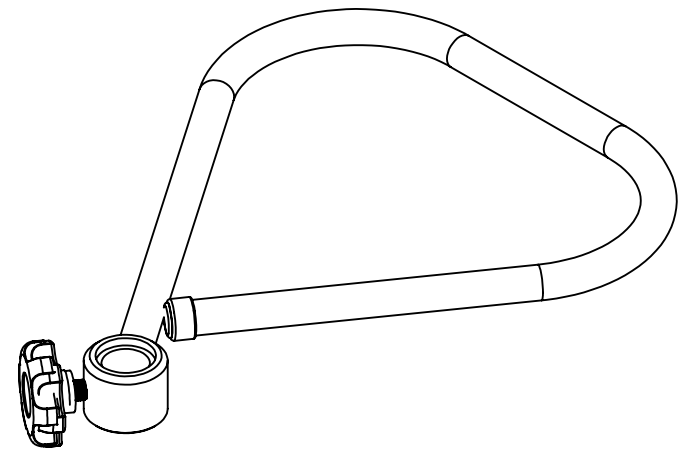
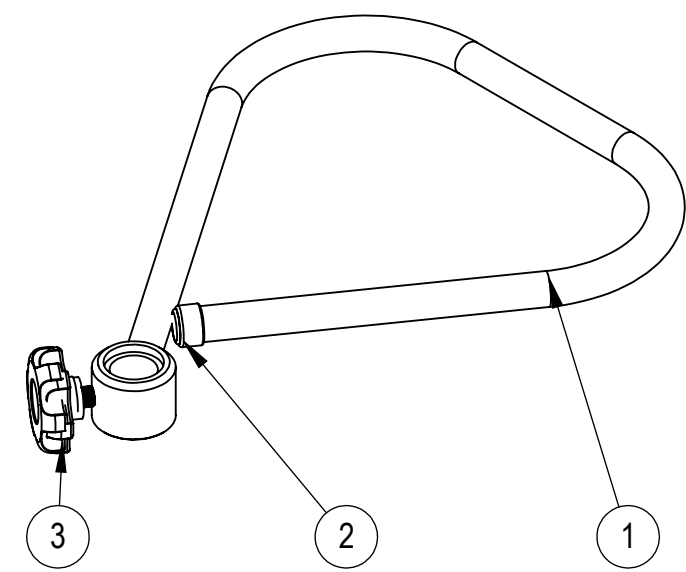
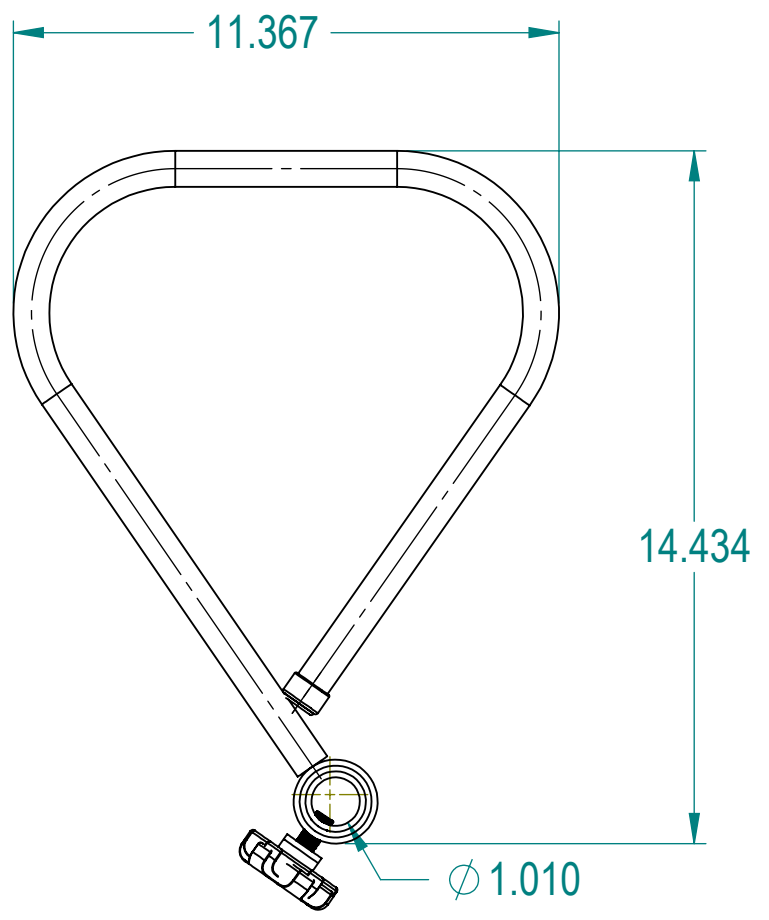


8 7 6 5 4 3 2 1

Revisions			
Rev	Description	Date	Approval
PF	BI Baseline	12/22/11	

Item	Pt #	Description	QTY.	Rev.
1	3503710140	1381MR 1" Handle & Sleeve Ass	1	PB
2	3505900750	Black Plastic Cap, 3/4"	1	PA
3	8110083203	Knob, Plastic 1360SS 3/8-16 x .750	1	PB



h:\sw\iv stand\components



PO#: \_\_\_\_\_ DATE: \_\_\_\_\_  
 APPROVAL: \_\_\_\_\_ TITLE: \_\_\_\_\_

**PROPRIETARY AND CONFIDENTIAL**  
 THE INFORMATION CONTAINED IN THIS DRAWING IS THE SOLE PROPERTY OF BLICKMAN HEALTH INDUSTRIES. ANY REPRODUCTION IN PART OR AS A WHOLE WITHOUT THE WRITTEN PERMISSION OF BLICKMAN HEALTH INDUSTRIES IS PROHIBITED.

UNLESS OTHERWISE SPECIFIED:  
**DIMENSIONS ARE IN INCHES**  
**TOLERANCES:**  
 3 PLACE .000 = ± .062  
 2 PLACE .00 = ± .125  
 1 PLACE .0 = ± .250  
 ANGULAR ± .5°

NAME	DATE
DRAWN M.J	12/22/2011
ENG APPR.	
MATERIAL	N/A
FINISH	
APPRX WEIGHT = 1.788 lbs	

<b>BLICKMAN INDUSTRIES, LLC</b> CLIFTON, N.J.		
TITLE: MRI Push Handle IV Stand 1" Pole		
SIZE <b>B</b>	PART NO. 3537426350	REV PF
DO NOT SCALE DRAWING	SCALE: 1:4	SHEET 1 OF 1

8 7 6 5 4 3 2 1